

# Industrial IoT Solutions

Thanks to the Internet of Things (IoT) and Industry 4.0, billions of devices have become connected and are used for collecting and distributing various kinds of information throughout the world. They can be utilized for environmental monitoring, petrochemical, electricity and renewable energy, transportation, health care systems and other industries.

Axiomtek offers a comprehensive industrial computing solutions that are designed for a variety of IoT applications.

Our computing platforms feature:

- Flexible CPU options
- Low power consumption
- Fanless designs
- Easy to use mechanisms
- Extensive expansion capabilities
- Wide operating temperature ranges
- Scalable storage interfaces
- Fast time to market



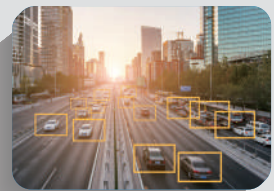
Smart Factory Automation



Heavy Industry



Robotic Industry



Vision Inspection AI Computing

Target Markets

Machine Vision System

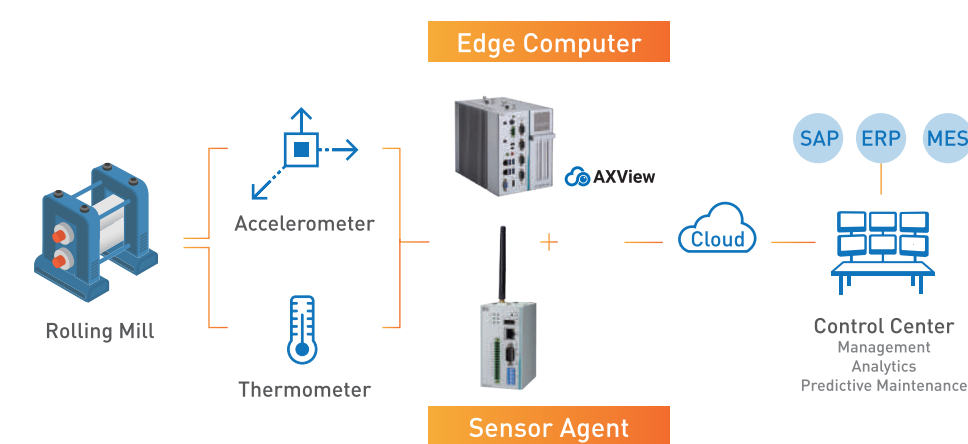
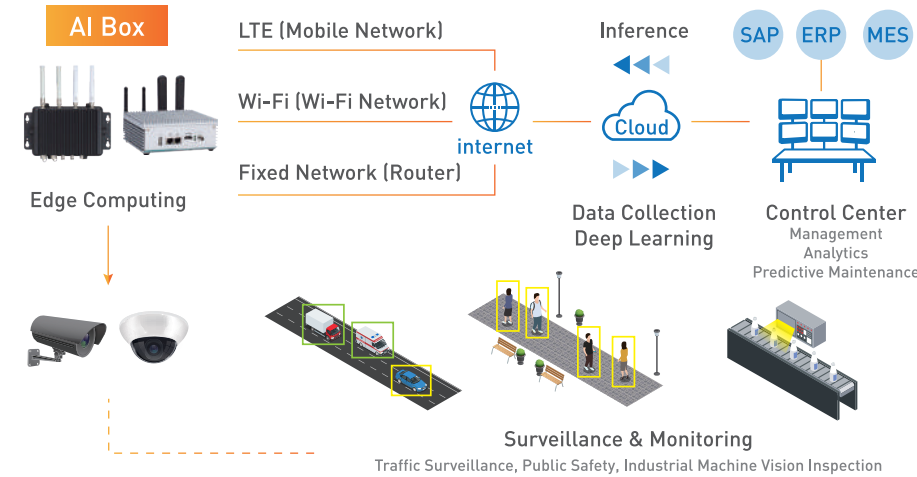
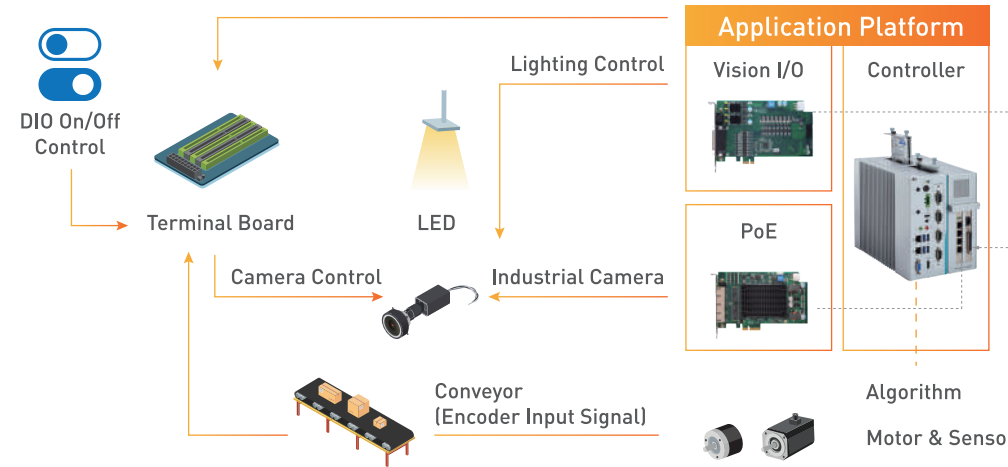
Counting, Inspection and Assembly Verification  
Gauging and Measurement  
Optical Character Recognition and Identification  
Quality Control and Productivity Improvement

AI Deep Learning

High Performance AI Computing  
Advanced Training and Inference at the Edge  
Image Recognition and Object Detection

PdM Solution

Machine Condition Monitoring and Alert  
Predictive Maintenance  
Dynamic Signal Acquisition and Analysis  
IIoT Cloud Connection



IPS960-511-PoE Machine Vision System

- 7th/6th Generation Intel® Core™ or Celeron® processors
- Intel® H110 chipset
- Built-in camera interface
- Supports two swappable 2.5" HDDs
- 24V DC power input
- -10°C to +55°C operating temperature range

## Frame Grabber and Vision I/O Card

AX92320 GigE Frame Grabber Card

- Four independent Gigabit PoE ports
- Supports 9.5KB Jumbo Frame and IEEE 1588
- Up to 20/120W PoE power from PCIe /6-pin ATX power connector
- PoE power management software
- Supports LAN port smart on/off
- 0°C to +60°C operating temperature range

AX92350 Real-Time Vision I/O Card

- Integrated vision I/O
- Trigger I/O, LED lighting control, isolated DIO and encoder input
- 0°C to +60°C operating temperature range
- PCI Express compliant



eBOX560-900-FL Fanless Edge AI System

- NVIDIA® JETSON™ TX2
- NVIDIA® Pascal™, 256 CUDA cores GPU
- One M.2 Key M with PCIe 2.0 x4 for NVMe SSD (optional)
- Supports JetPack
- -30°C to +60°C operating temperature range
- High AI computing performance for GPU-accelerated processing
- Compact size and robust construction
- Ideal for intelligent edge applications



eBOX800-900-FL IP67-rated Fanless Outdoor Edge System

- NVIDIA® JETSON™ TX2
- NVIDIA® Pascal™, 256 CUDA cores GPU
- One M.2 Key M with PCIe 2.0 x4 for NVMe SSD (optional)
- One IEEE 802.3at Gigabit PoE (30W)
- 100 to 240V AC wide range power input with 10kV surge protection
- -30°C to +60°C operating temperature range
- High AI computing performance for GPU-accelerated processing
- Highly rugged with flexible I/Os
- Ideal for outdoor edge applications



IPC962-512-FL 2-slot Fanless Industrial Computer

- LGA1151 Socket 7th/6th Generation Intel® Core™ i7/i5/i3 or Celeron® processors
- Intel® Q170 chipset
- One full-size PCI Express Mini Card slot with USB and PCIe interfaces
- Compact and front I/O design
- Two swappable 2.5" HDD and RAID 0, 1
- -10°C to +60°C operating temperature range
- 24V DC power input



IRU152 RISC-Based DIN-Rail Fanless Embedded System

- NXP i.MX 6 UL processor
- 512MB onboard DDR3 SDRAM memory
- 8GB onboard eMMC flash memory
- Two Mini Card slots for Wi-Fi, 3G/4G or LoRa connection
- Four isolated analog input channels
- -40°C to +70°C operating temperature range
- Embedded Linux operating system (Yocto)





## ASIA

### Axiomtek Co., Ltd (HQ)

8F., No.55, Nanxing Road, Xizhi District,  
New Taipei City 221, Taiwan  
Tel +886-2-8646-2111  
Fax +886-2-8646-2555  
E-mail info@axiomtek.com.tw

### Axiomtek Technology Co., Ltd

10F, Block B, Build 6 (Baohui Building),  
Baoneng Science & Technology Park,  
No.1, Qingxiang Road, Longhua New  
District, Shenzhen 518109, P.R. China  
Tel +86-755-66865899  
Fax +86-755-66863068  
E-mail axcn@axiomtek.com.cn

### Axiomtek Japan Co., Ltd.

14F, 1-2-1 Kinshi, Sumida-ku,  
Tokyo, 130-0013, Japan  
Tel +81-3-6853-6675  
Fax +81-3-6853-6601  
E-mail info@axiomtek.co.jp

### Axiomtek (Malaysia) Sdn. Bhd.

No 16, Jalan Tandang 51/205A,  
Seksyen 51, 46050 Petaling Jaya,  
Selangor, Malaysia  
Tel +603-77733908  
Fax +603-77733873  
E-mail info@axiomtek.com.my

### Axiomtek (Thailand) Co., Ltd.

7/17 Moo 6, Tumbol Banmai,  
Amphur Pakkret, Nonthaburi,  
Thailand 11120  
Tel +662-573-4725  
Fax +662-573-4726  
E-mail sales@axiomtek.co.th

## USA

### Axiomtek

18138 Rowland Street, City of Industry,  
CA 91748, USA  
Tel +1-626-581-3232  
Fax +1-626-581-3552  
E-mail info@axiomtek.com  
sales@axiomtek.com

### Regional Sales Office

Tel +1-626-581-3232  
Western Region ext. 116  
Northeast/Southeast Region ext. 123  
North Central Region ext. 189

### Axiomtek Systems

300 Griffin Brook Drive, Methuen,  
MA 01844, USA  
Tel +1-978-258-0108  
E-mail sales@axiomtek.com

## EU

### Axiomtek Deutschland GmbH

Hans-Böckler-Str. 10,  
40764 Langenfeld, Germany  
Tel +49-2173-399360  
Fax +49-2173-3993636  
E-mail sales@axiomtek.eu

### Axiomtek UK Limited

920 Peter House, Oxford Street,  
Manchester M1 5AN, UK  
Tel +44(0)1612093680  
E-mail wen@axiomtek.com.tw

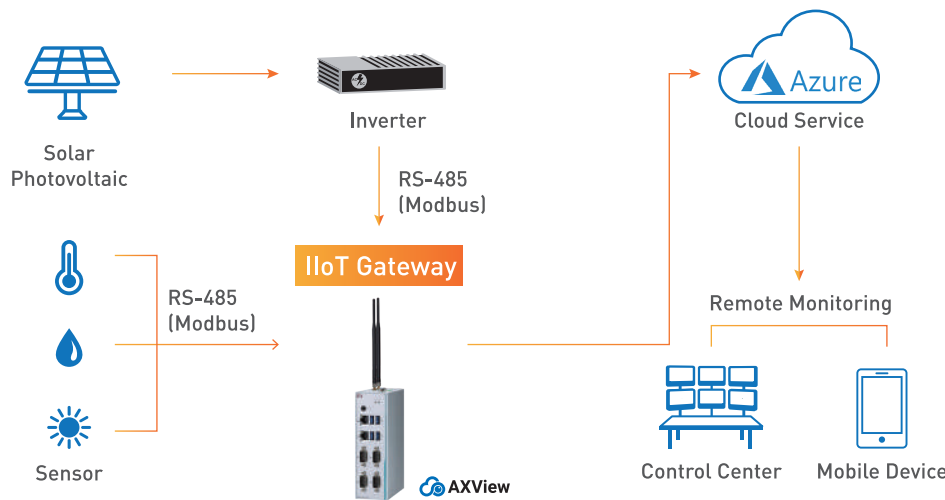
### Axiomtek ITALIA S.r.l.

Via Pavia, 21, 20835 Muggiò (MB),  
Italy  
Tel +39-02-664299.1 r.a.  
Fax +39-02-66400279  
E-mail info@axiomtek.it



### IIoT Gateway

**Solar Energy Solutions**  
Real-Time Device Monitoring and Remote Management  
Easy Integration with Back-End Operating Systems  
Connectivity with Sensors Used in IoT Applications



### IC0320-83C DIN-Rail Fanless Embedded System

- Intel® Celeron® N3350 processor
- Four RJ-45 Gigabit PoE ports
- 8-bit programmable DIO for IoT gateway applications
- 12V DC to 24V DC wide range power input
- -20°C to +70°C operating temperature range
- Supports AXView 3.0



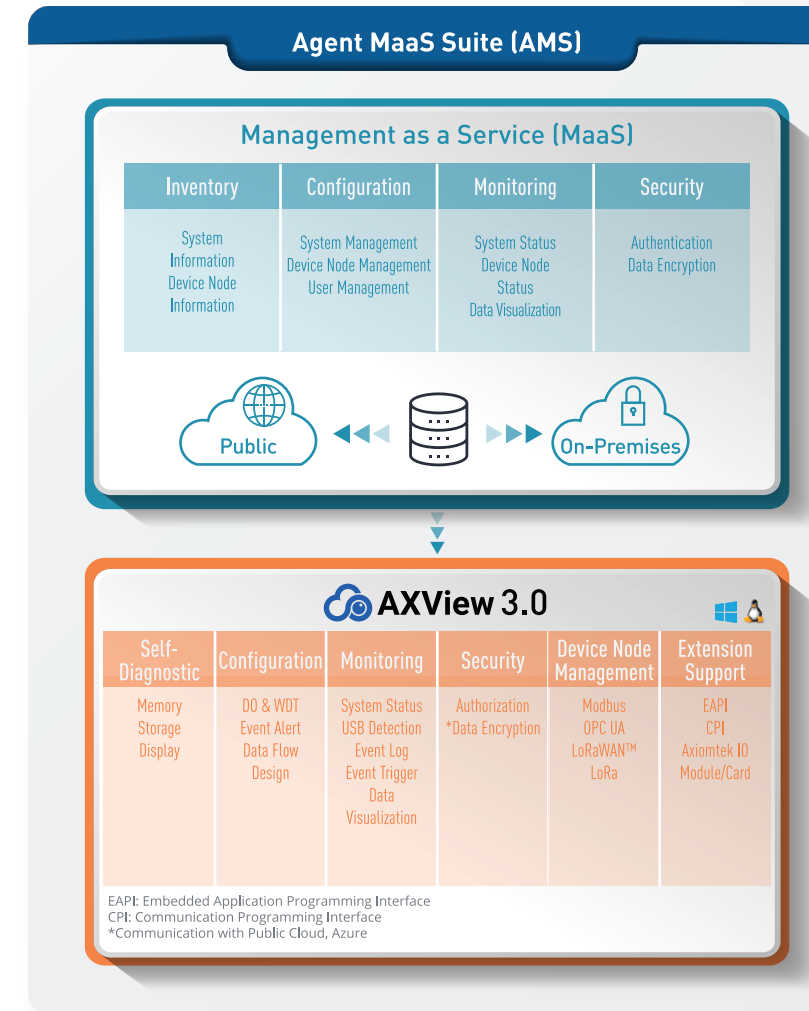
### IC0300-83B DIN-Rail Fanless Embedded System

- Intel® Celeron® Processor N3350 or Pentium® Processor N4200
- Two or four isolated COM ports, four USB ports and two GbE LAN ports
- 8-bit programmable DIO for IoT gateway applications
- 12V DC to 24V DC wide range power input
- -20°C to +70°C operating temperature range [-40°C to +70°C optional]
- Supports AXView 3.0
- Fanless and cableless design

## Agent MaaS Suite (AMS) Architecture

### IIoT Remote Management Solution

- A brand new software platform for system management, I/O devices, sensors and data. It includes cloud service for remote access and local agent that supports standard industrial protocols.
- AMS can help systems integrators shorten their project development and deployment time.



# Industrial IoT Solutions