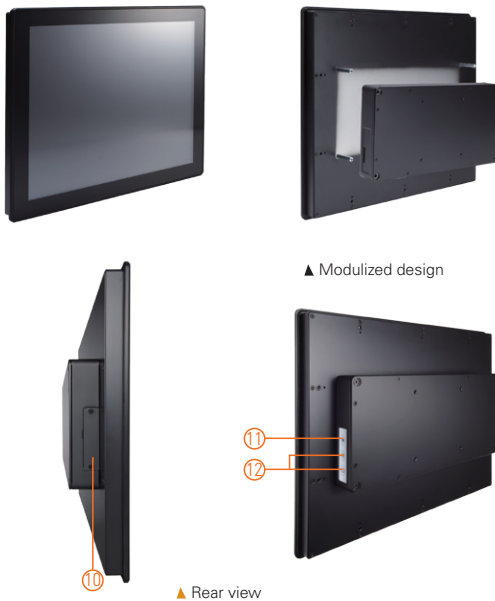


GOT3177T-834

17" SXGA TFT Flat Bezel Touch Panel Computer with Intel® Celeron® Processor J1900 (-10°C to +50°C)

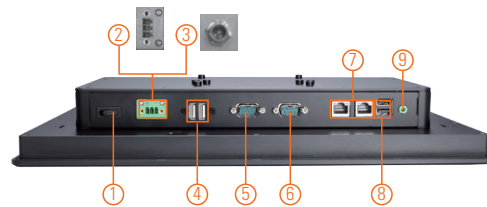
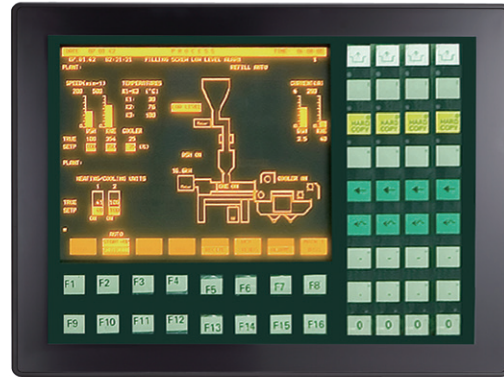
Features

- 17" SXGA TFT flat resistive touch
- Fanless and modularized design
- Intel® Bay Trail-D Celeron® processor J1900
- 2.5" 7/9.5 mm SATA HDD & CFast™ or mSATA
- WLAN/3G module & antenna (optional)
- 2 GbE LAN, 2 USB 2.0, 2 USB 3.0 and 2 COM
- IP65 front bezel
- Supports panel mount and optional VESA arm/desktop stand/wall mount
- -10°C to +50°C wide operating temperature range



▲ Modularized design

▲ Rear view



- | | | |
|---|---------------------------|---------------------------|
| 1. Power switch | 5. COM 1 (RS-232/422/485) | 10. CFast™ slot |
| 2. Terminal block for DC power input or | 6. COM 2 (RS-232/422/485) | 11. Backlight switch |
| 3. Screw conn. w/ AC power adapter | 7. Ethernet x 2 | 12. Brightness adjustment |
| 4. USB 2.0 x 2 | 8. USB 3.0 x 2 | |
| | 9. Audio (Line-out) | |

Introduction

The GOT3177T-834 adopts a 17-inch SXGA LCD and supports Intel® Bay Trail-D processor. By supporting a wide range operating temperature from -10°C to +50°C, it can be used in harsh environment. The rugged industrial panel PC supports low power Intel® Celeron® processor J1900. It also provides 2 PCI Express Mini Card slots for 3G, wireless network connectivity. The 17" flat front bezel touch panel computer is suitable for transportation, heavy-duty industry, smart factory automation, and oil pipe monitoring systems.

Wide Temperature Range Support

The Intel® Bay Trail-based GOT3177T-834 applies unique extended temperature technology with wide temperature range support as well as fanless operation. It also has a compact design for harsh environment.

WLAN Antenna Support (optional)

The 17" SXGA IP65 industrial panel PC, GOT3177T-834, provides 2 PCI Express Mini Card slots and WLAN/3G antennas for wireless network connectivity.

Specifications

| | | |
|-------------|---------------------------------|---|
| Front Bezel | IP65 front bezel | |
| LCD Panel | Display Type | 17" SXGA TFT LCD |
| | Brightness (cd/m ²) | 350 nits |
| | Resolution | 1280 x 1024 |
| Main System | CPU | Intel® Bay Trail-D Celeron® processor J1900 4C@2.0GHz |
| | Chipset | SoC Integrated |
| | System Memory | 1 x 204-pin DDR3L-1333/1600 SO-DIMM, up to 8GB |
| | BIOS | AMI UEFI BIOS |
| | Storage | 1 x 2.5" 7/9.5 mm SATA HDD 1 x CFast™ or 1 x mSATA |
| | Watchdog Timer | 255 levels, 0 ~ 255 sec. |
| | Onboard Graphics | Integrated Intel® HD Graphics |

Specifications

| | |
|---------------------|---|
| I/O Connector | 2 x RS-232/422/485 (default RS-232) 1 x audio (Line-out) 2 x USB 2.0 2 x USB 3.0 2 x 10/100/1000Mbps Ethernet (Intel® i210IT) |
| Expansion Interface | 1 x full-size PCI Express Mini Card slot (with SIM) 1 x full-size PCI Express Mini Card slot with mSATA (optional) |
| Touchscreen | Flat resistive touch |
| Power Supply | 1. DC version: 9 ~ 36 VDC 2. AC version: 12 VDC with adapter |
| Power Consumption | 50 W |
| Dimensions | 398.02 mm (15.64") (W) x 59.9 mm (2.36") (D) x 330.44 mm (13.01") (H) |
| Packing Dimensions | 510 mm (20.08") (W) x 190 mm (7.48") (D) x 540 mm (21.26") (H) |
| Weight (net/gross) | 4.8 kg (10.6 lb)/7.1 kg (15.67 lb) |
| Environment | Operating temperature: -10°C ~ +50°C (+14°F ~ +122°F) Relative humidity: 20% ~ 90% @ +40°C; non-condensing Operation vibration: 2G, 10 ~ 500Hz, random for CFast™ |
| Certificate | CE |

Ordering Information

| | |
|--------------------|---|
| GOT3177T-834-FR-DC | 17" SXGA TFT fanless touch panel computer with Intel® Celeron® J1900 2.0GHz quad core processor, 5-wire flat resistive touch screen and 9 ~ 36 VDC terminal block connector |
| GOT3177T-834-FR-J | 17" SXGA TFT fanless touch panel computer with Intel® Celeron® J1900 2.0GHz quad core processor, 5-wire flat resistive touch screen and AC-DC 12 VDC power adapter (screw type connector) |

Optional Accessories

| | |
|--------------|---|
| 82231770050E | GOT3177T-834 wall mount kit |
| 50906D24000E | Adaptor 24V/120W, wire only, FSP120-AAAN3 |

Optional EOS Installation

| | |
|-------|--|
| WES 7 | |
| WE8S | |

Optional OS Installation

| | |
|--------------|--|
| Windows® 8.1 | |
| Windows® 7 | |

Dimensions

