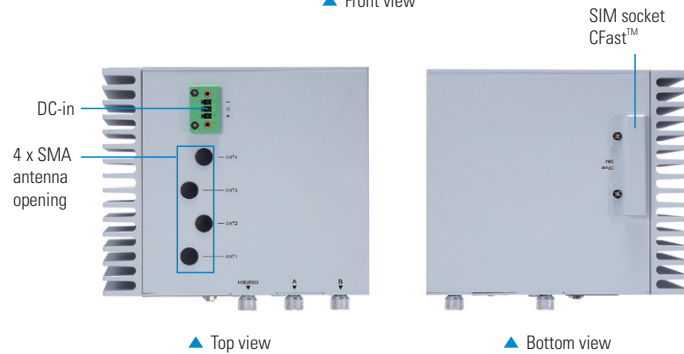
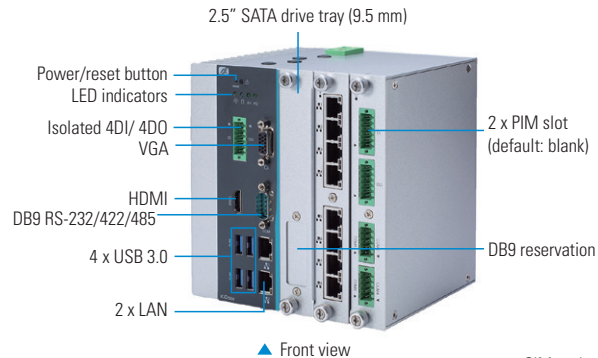


# ICO500-518 NEW

Fanless Embedded System with 7th Gen Intel® Core™ i7/i5/i3 & Celeron® Processor and Dual Modular I/O Expansion Design

## Features

- 7th gen Intel® Core™ i7/i5/i3 & Celeron® processors (Kaby Lake-U)
- 2 PIM (Plug-in I/O Module) slots
- Fanless and compact design
- Wide operating temperature range from -40°C to +70°C
- 12 to 48 VDC wide range power input
- OVP, UVP, OCP, RPP power protection design
- 1 swappable 2.5" SATA drive tray



## Specifications

Standard Color	Silver						
Construction	Aluminum extrusion and heavy-duty steel, IP40						
CPU	Intel® Core™ i7-7600U 2C @ 2.8GHz Intel® Core™ i5-7300U 2C @ 2.6GHz Intel® Core™ i3-7100U 2C @ 2.4 GHz Intel® Celeron® 3965U 2C @ 2.2 GHz						
System Memory	1 x DDR4-2133 SO-DIMM, up to 16GB						
Chipset	SoC integrated						
BIOS	AMI						
TPM	TPM 2.0						
System I/O Outlets	<table border="0"> <tr> <td>Top Side</td> <td>1 x DC power input with terminal block 4 x Antenna opening</td> </tr> <tr> <td>Bottom Side</td> <td>External SIM slot &amp; CFast™ card</td> </tr> <tr> <td>Front Side</td> <td>1 x HDMI 2 x GbE LAN 4 x USB 3.0 1 x VGA 1 x DB9 RS-232/422/485 1 x Isolated DIO (4-in/4-out) 1 x 2.5" SATA drive tray 2 x PIM slot</td> </tr> </table>	Top Side	1 x DC power input with terminal block 4 x Antenna opening	Bottom Side	External SIM slot & CFast™ card	Front Side	1 x HDMI 2 x GbE LAN 4 x USB 3.0 1 x VGA 1 x DB9 RS-232/422/485 1 x Isolated DIO (4-in/4-out) 1 x 2.5" SATA drive tray 2 x PIM slot
Top Side	1 x DC power input with terminal block 4 x Antenna opening						
Bottom Side	External SIM slot & CFast™ card						
Front Side	1 x HDMI 2 x GbE LAN 4 x USB 3.0 1 x VGA 1 x DB9 RS-232/422/485 1 x Isolated DIO (4-in/4-out) 1 x 2.5" SATA drive tray 2 x PIM slot						
Watchdog Timer	255 levels, 1 to 255 sec.						
Storage	1 x Swappable 2.5" SATA drive (9.5 mm height) ** DIN-rail mounting with SSD 1 x External CFast card						
Expansion Interface	2 x Full-size PCI Express Mini Card slot 1 x External SIM card slot						
System Indicator	1 x LED indicator for system power 1 x LED indicator for HDD activities 2 x Programmable						
Power Supply	12 to 48 VDC, OVP, UVP, OCP, RPP power protection design						
Operating Temperature	-40°C to +70°C (-40°F to +158°F) with 2 PIM modules (PIM700 excluded) -40°C to +60°C (-40°F to +140°F) with 1 PIM700, 1 the other PIM module -40°C to +50°C (-40°F to +122°F) with 2 PIM700						
Humidity	10% to 95%, non-condensing						

Vibration Endurance (operational)	3 Grms with SSD, DIN-rail/wall mounting (5 to 500Hz, X/Y/Z direction; random)
Weight (net/gross)	2.11 kg (4.65 lb)/3.3 kg (7.27 lb)
Certifications	CE (Class A), FCC, EN 50121-4
Dimensions	145 mm (5.70") (W) x 125 mm (4.92") (D) x 155 mm (6.10") (H)
Mounting	DIN-rail (standard) Wall mount (optional)
EOS Support	Windows® 10 Linux support package
Software Support	AMS.AXView

## Ordering Information

Standard	
ICO500-518-Celeron	Fanless embedded system with Intel® Celeron® 3965U 2.2 GHz processor, 4 USB 3.0, 2 RJ-45 LAN, COM, DIO (4-in/4-out), 2.5" SATA tray, HDMI, VGA
ICO500-518-i3	Fanless embedded system with Intel® Core™ i3-7100U 2.4 GHz processor, 4 USB 3.0, 2 RJ-45 LAN, COM, DIO (4-in/4-out), 2.5" SATA tray, HDMI, VGA
ICO500-518-i5	Fanless embedded system with Intel® Core™ i5-7300U 2.6 GHz processor, 4 USB 3.0, 2 RJ-45 LAN, COM, DIO (4-in/4-out), 2.5" SATA tray, HDMI, VGA
ICO500-518-i7	Fanless embedded system with Intel® Core™ i7-7600U 2.8 GHz processor, 4 USB 3.0, 2 RJ-45 LAN, COM, DIO (4-in/4-out), 2.5" SATA tray, HDMI, VGA

## Ordering Information

### I/O Modules

PIM100 8 x isolated, 4-wire COM  
(RS-232/422/485)



PIM101 8 x isolated CANbus 2.0 A/B



PIM700 8 x RJ-45 Gb Ethernet



PIM900 4 x isolated, 4-wire COM  
(RS-232/422/485) &  
isolated 8-in/8-out DIO



### Optional

2.5" SATA SSD	16GB or above
CFast™	16GB or above
DDR4 SO-DIMM	4GB to 16GB

\* Specifications and certifications may vary based on different requirements.

## Dimensions

