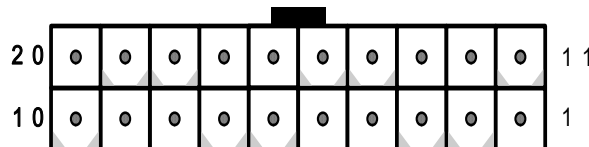


PX-20S3-RS-R40

20-Slot Backplane with 18 PCI and 1 ISA Bus User Manual Ver. 4.0

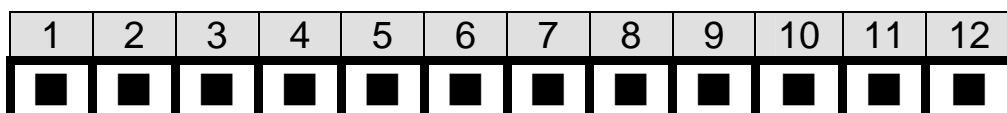
1. PW2: ATX Power Connector

Pin	Description	Pin	Description
1	+3.3Vdc	11	+3.3Vdc
2	+3.3Vdc	12	-12Vdc
3	GND	13	GND
4	+5Vdc	14	PS-ON
5	GND	15	GND
6	+5Vdc	16	GND
7	GND	17	GND
8	PWR-OK	18	-5Vdc
9	+5VSB	19	+5Vdc
10	+12Vdc	20	+5Vdc



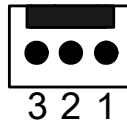
2. PW1: AT Power Connector

Pin	Description	Pin	Description
1	PWRGD	7	GND
2	+5V	8	GND
3	+12V	9	-5V
4	-12V	10	+5V
5	GND	11	+5V
6	GND	12	+5V



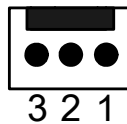
3. CN2: Backplane to Mainboard ATX power control Connector

Pin	Description
1	5VSB
2	PSON#
3	GND



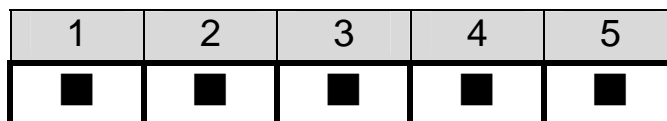
4. CN3, CN5: Fan Connector

Pin	Description
1	NC
2	+12V
3	GND



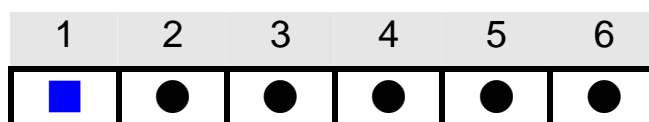
5. CN1: Voltage Connector

Pin	Description
1	+5V
2	-5V
3	-12V
4	+12V
5	GND



6. PW4, PW5: Power Connector

Pin	Description
1	+5V
2	+5V
3	+5V
4	GND
5	GND
6	GND



7. PW3: Power Connector

Pin	Description	Pin	Description
1	PWR_GD	7	GND
2	+5V	8	GND
3	+12V	9	-5V
4	-12V	10	+5V
5	GND	11	+5V
6	GND	12	+5V

1	2	3	4	5	6	7	8	9	10	11	12
■	■	■	■	■	■	■	■	■	■	■	■

8. PCI routing table:

PCI SLOT	PCI3	PCI4
IDSEL	AD31	AD28
REQ#	REQ0#	REQ3#
GNT#	GNT0#	GNT3#
INTA	B	A
INTB	C	B
INTC	D	C
INTD	A	D

PCI SLOT	PCI5	PCI6	PCI7	PCI8
IDSEL	2_AD20	2_AD21	2_AD22	2_AD23
REQ#	2_REQ0#	2_REQ1#	2_REQ2#	2_REQ3
GNT#	2_GNT0#	2_GNT1#	2_GNT2#	2_GNT3
INTA	C	D	A	B
INTB	D	A	B	C
INTC	A	B	C	D
INTD	B	C	D	A

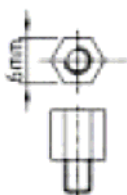
PCI SLOT	PCI 9	PCI 10	PCI 11	PCI 12
IDSEL	2_AD24	2_AD25	2_AD26	2_AD27
REQ#	2_REQ4#	2_REQ5#	2_REQ6#	2_REQ7
GNT#	2_GNT4#	2_GNT5#	2_GNT6#	2_GNT7
INTA	C	D	A	B
INTB	D	A	B	C
INTC	A	B	C	D
INTD	B	C	D	A

PCI SLOT	PCI 13	PCI 14	PCI 15	PCI 16
IDSEL	3_AD20	3_AD21	3_AD22	3_AD23
REQ#	3_REQ0#	3_REQ1#	3_REQ2#	3_REQ3
GNT#	3_GNT0#	3_GNT1#	3_GNT2#	3_GNT3
INTA	D	A	B	C
INTB	A	B	C	D
INTC	B	C	D	A
INTD	C	D	A	B

PCI SLOT	PCI 17	PCI 18	PCI 19	PCI 20
IDSEL	3_AD24	3_AD25	3_AD26	3_AD27
REQ#	3_REQ4#	3_REQ5#	3_REQ6#	3_REQ7
GNT#	3_GNT4#	3_GNT5#	3_GNT6#	3_GNT7
INTA	D	A	B	C
INTB	A	B	C	D
INTC	B	C	D	A
INTD	C	D	A	B

9. Notice:

- a. Recommend to use 6mm width spacer to install



- b. Torsion must less than 6lb-inch

10. Dimension:

